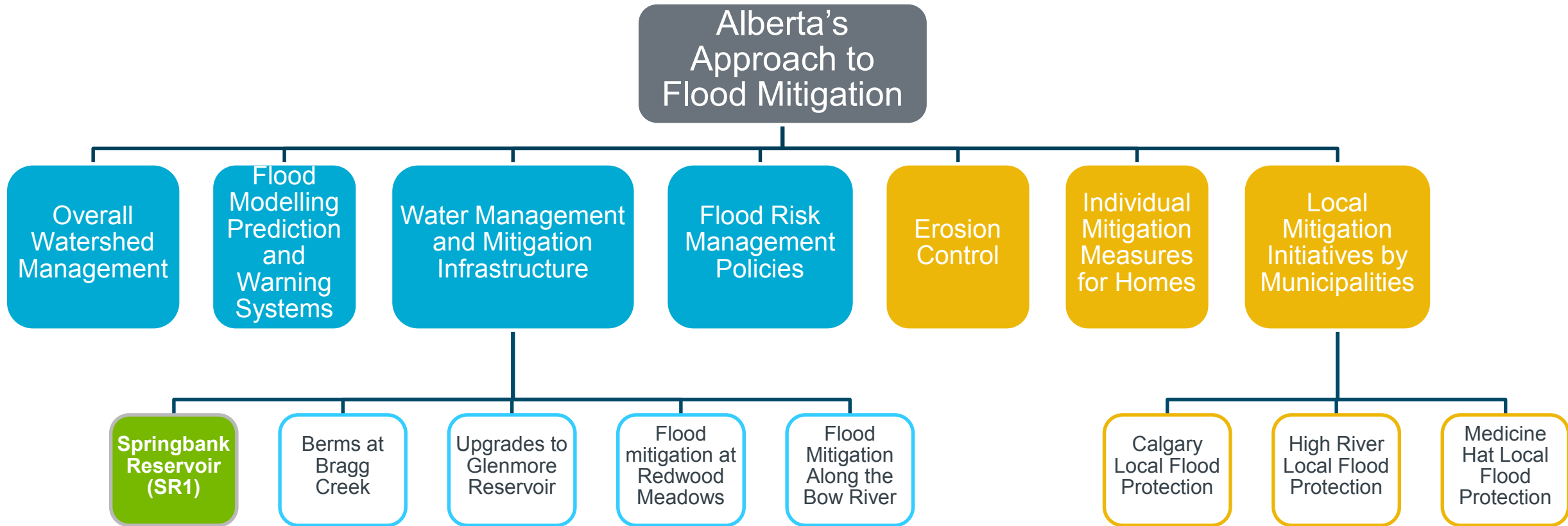


# Calgary River Communities Action Group Annual General Meeting **Springbank Off-Stream Reservoir (SR1)**

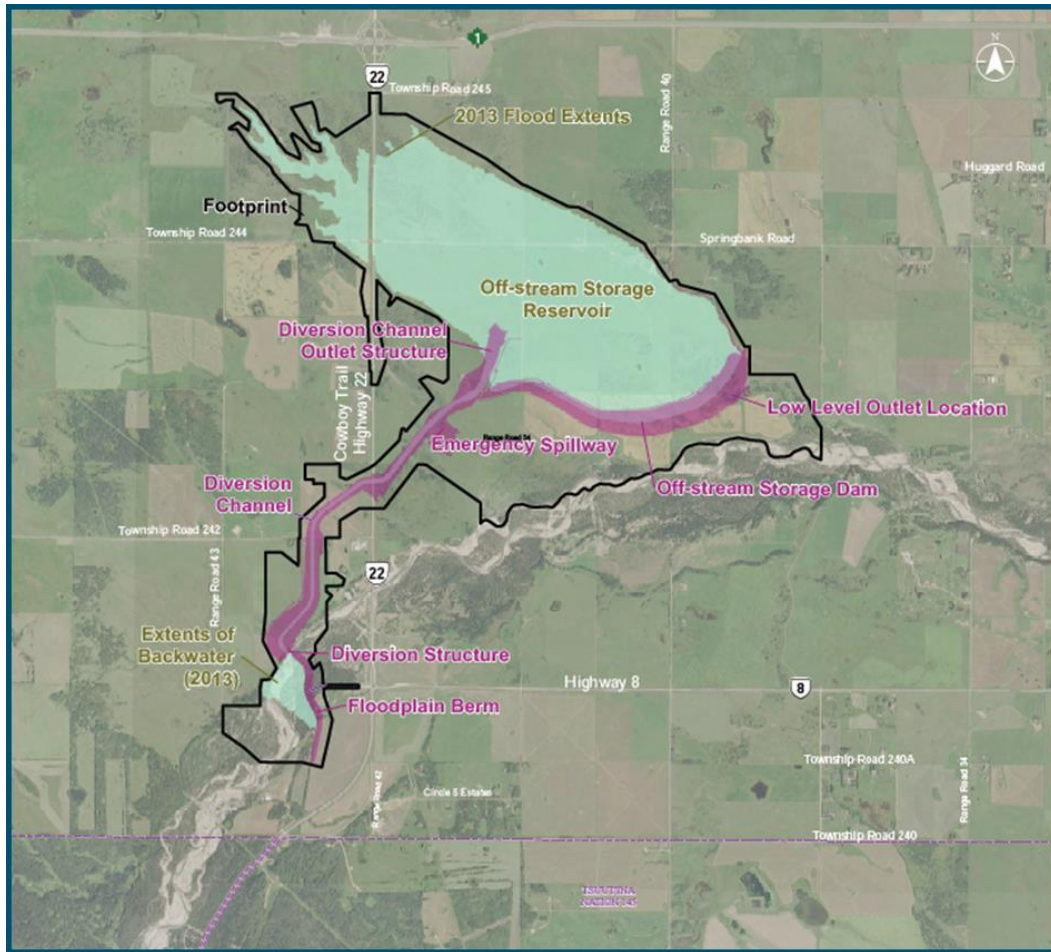
---

December 15, 2020  
Alberta Transportation

# Provincial System for Flood Mitigation



# Key Components



- Diversion Structure
  - Debris Barrier
- Floodplain Berm
  - Auxiliary Spillway
- Diversion Channel
  - Emergency Spillway
- Dam
- Low Level Outlet

[Updated Conceptual Animation](#)

# Project Operations

---



Activates at  $160\text{m}^3/\text{s}$

Excess flow diverted to reservoir up to  $600\text{m}^3/\text{s}$

Up to 77.2 million  $\text{m}^3$  in storage

# Regulatory Process

---

## Provincial Approval

- Environmental Impact Assessment review
- Supplemental Information Requests
- Natural Resources Conservation Board Hearing process

## Federal Approval

- Impact Assessment Agency of Canada review
- Supplemental Information Requests
- Construction approvals

# SR1 Environmental Impacts and Mitigation

---

- Environmental concerns have been expressed by stakeholders, Indigenous groups, regulators, and the SR1 team.
- Impacts that cannot be mitigated by Project design will be addressed through modeling, monitoring plans, and other restoration measures after construction.



# SR1 Stakeholder Concerns and Mitigations

---

- Impacts to land, air, water and wildlife.
  - Monitoring plans have been developed to identify and address impacts.
- Land Use
  - Transportation is engaging with First Nations and others to:
    - Determine future land uses.
    - Enable Indigenous participation in construction and monitoring.

# SR1 Mitigation and Monitoring

- Mitigation and Monitoring plans are in place to identify when impacts occur and to determine mitigation response.

Wildlife – Project designed to limit effects on wildlife

Vegetation – Reverts pasture land to more natural state

Air Quality – Dust during construction / operations





# SR1 Mitigation and Monitoring

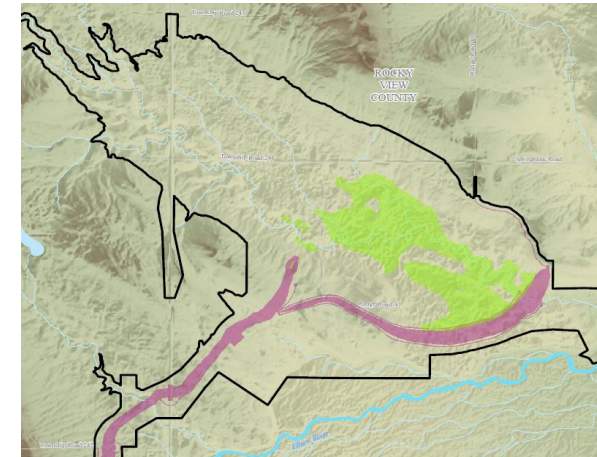
- Mitigation and Monitoring plans are in place to identify when impacts occur and to determine mitigation response.

Fish, Fish Habitat, and Downstream Migration –  
Designed to avoid impacts to fish passage

Sediment and Dust – Mitigation during  
construction and revegetation after construction

Surface Water Quality and Contamination –  
Water will be tested and monitored

Groundwater and Well Water Impacts – Water  
well monitoring plan will be in place



# Engagement

## Stakeholders:

- Landowners
- City of Calgary
- Rocky View County
- Springbank Community Association
- Calgary River Communities Action Group
- Irrigation companies
- Downstream communities
- Bow River Basin Council
- Elbow River Sustainability Alliance

## Indigenous Groups:

- Kainai/Blood Tribe
- Piikani Nation
- Siksika Nation
- Stoney Nakoda Nations
- Tsuut'ina Nation
- Ermineskin Nation
- Louis Bull Tribe
- Montana Nation
- Samson Cree Nation
- Metis Nation of Alberta Region 3
- Metis Nation of British Columbia
- Ktunaxa Nation Council
- Foothills Ojibway Society

# SR1 Land Use

---

- Primary use is flood mitigation
- Secondary use principles:
  - Safety overrides all secondary uses
  - Only uses that have a minimal impact on the land will be permitted
  - Indigenous groups' traditional uses and Treaty rights are a priority
  - Non-motorized recreation will be permitted in some areas
  - Grazing may be used to manage ecosystem health
- AEP will develop the final Land Use Plan with stakeholder input

# SR1 Land Acquisition

---

- Land acquisition
  - Voluntary acquisitions are being pursued.
  - Approximately 25% of land has been acquired.
  - Compensation is based on Expropriation Act principles.

# Cost and Budget

---

- Total project budget is \$432 million.
- Final project cost will be based on:
  - final land acquisition costs;
  - final design and tendering;
  - cost of conditions from the regulatory process; and
  - project taking longer to complete relative to initial assumptions.
- SR1 is eligible for federal support of \$168.5 million under the Government of Canada's Disaster Mitigation and Adaptation Fund.

# Next Steps

---

- Complete responses provincial SIRs
- Continue engagement with stakeholders and Indigenous groups
- NRCB Hearing (opportunity for public participation)
- Should the project be approved, construction would begin immediately following regulatory approval.
- Construction will take a total of three years. SR1 will be partially functional offering mitigation up to a one-in-one hundred-year capacity after 2 years of construction and fully operational after 3 years of construction.

# Questions or Comments?

---



To stay up to date about the project please visit our webpage at:

<https://www.alberta.ca/springbank-off-stream-reservoir.aspx>

For inquiries please email us at:

[Springbank-Project@gov.ab.ca](mailto:Springbank-Project@gov.ab.ca)