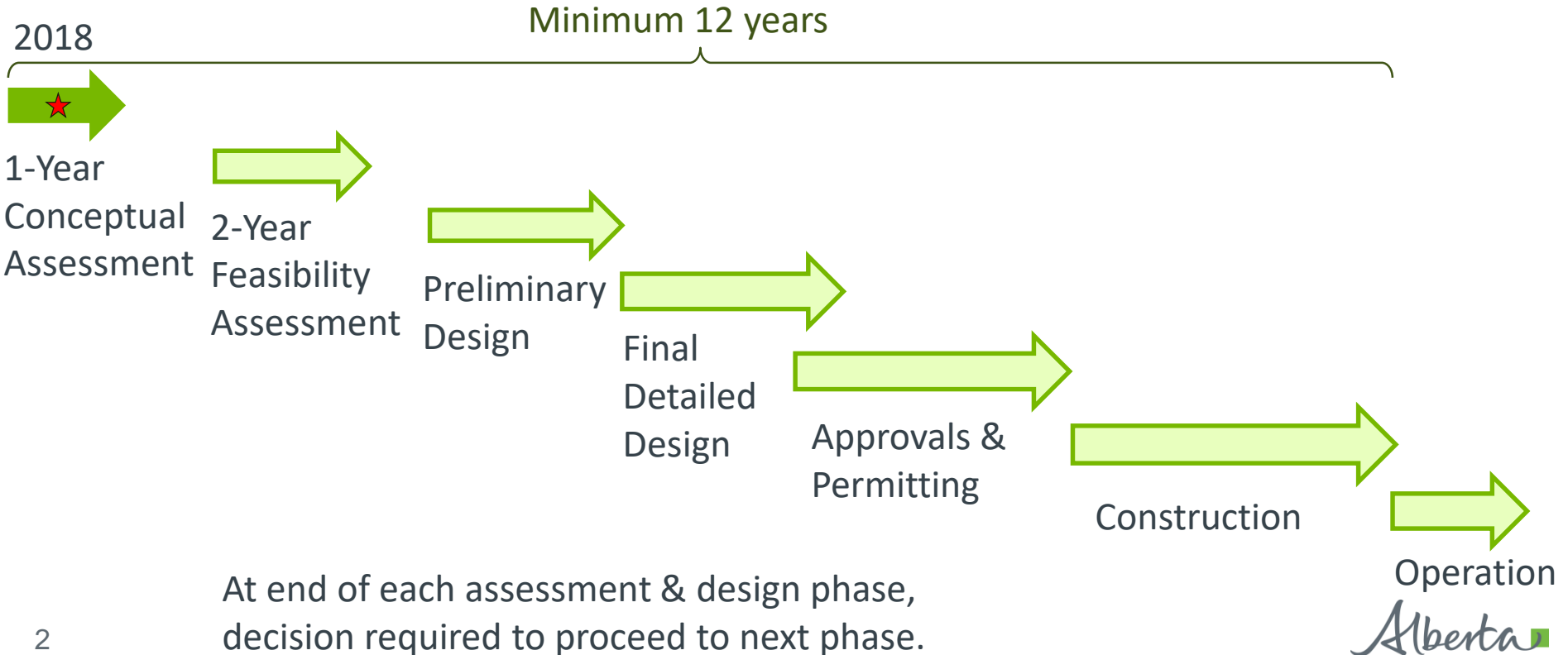


An aerial photograph of a large, turquoise reservoir in a valley. The water is calm with some ripples. The surrounding landscape is green and hilly, with a few small islands or peninsulas in the water. In the far distance, a range of mountains is visible under a clear blue sky with a few wispy clouds.

Bow Basin Water Management Options Project – Conceptual Assessment

Rick Blackwood, ADM
Environment and Parks

Project Timeline



Conceptual Assessment Objectives

New Morley
Reservoir

or

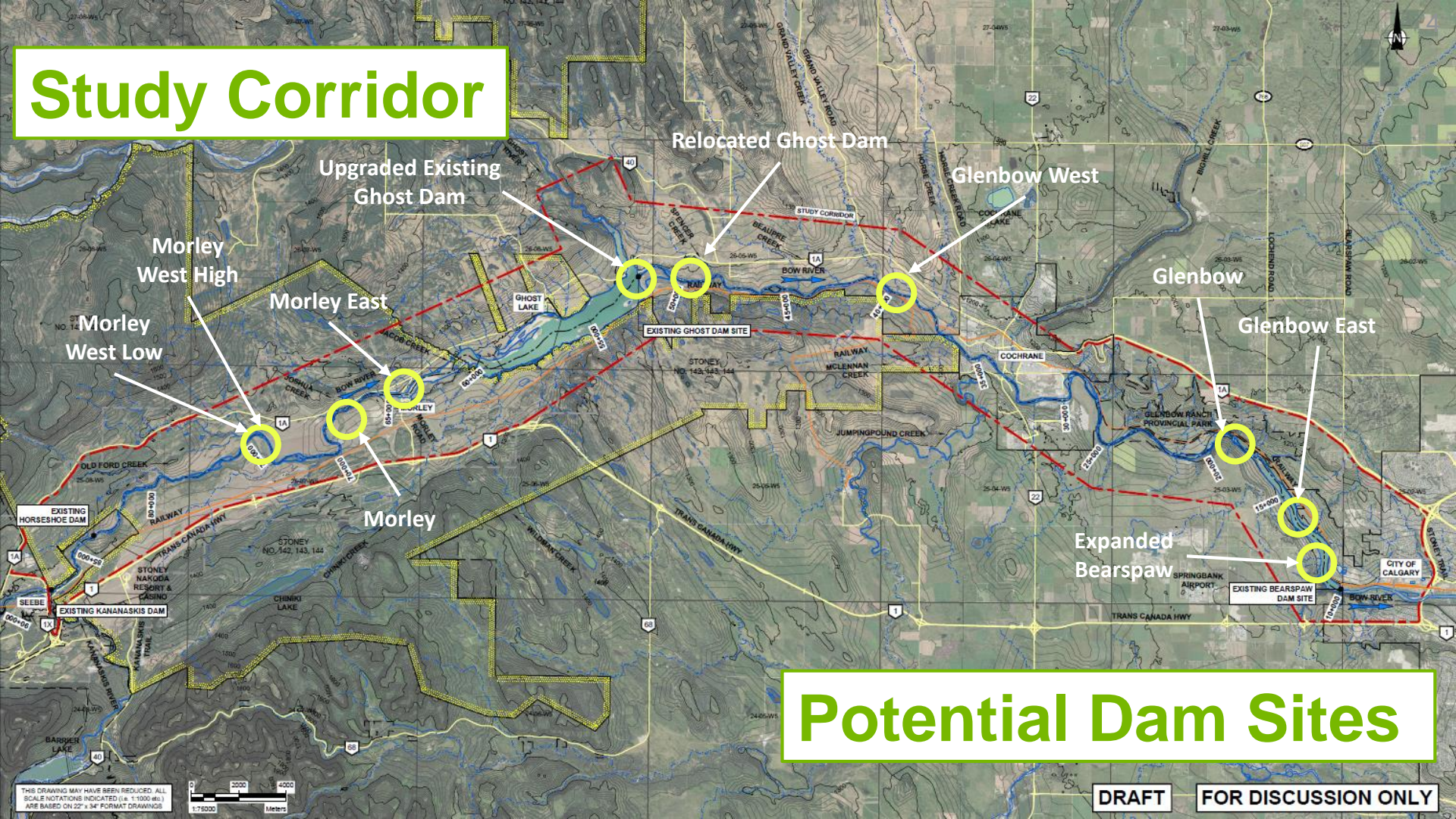
Expanded
Ghost
Reservoir

or

New Glenbow
Reservoir

Conceptual Assessment: conceptual designs for 3 options, considering Indigenous, environmental & stakeholder perspectives, but not yet recommending a preferred option.

Study Corridor



Potential Dam Sites

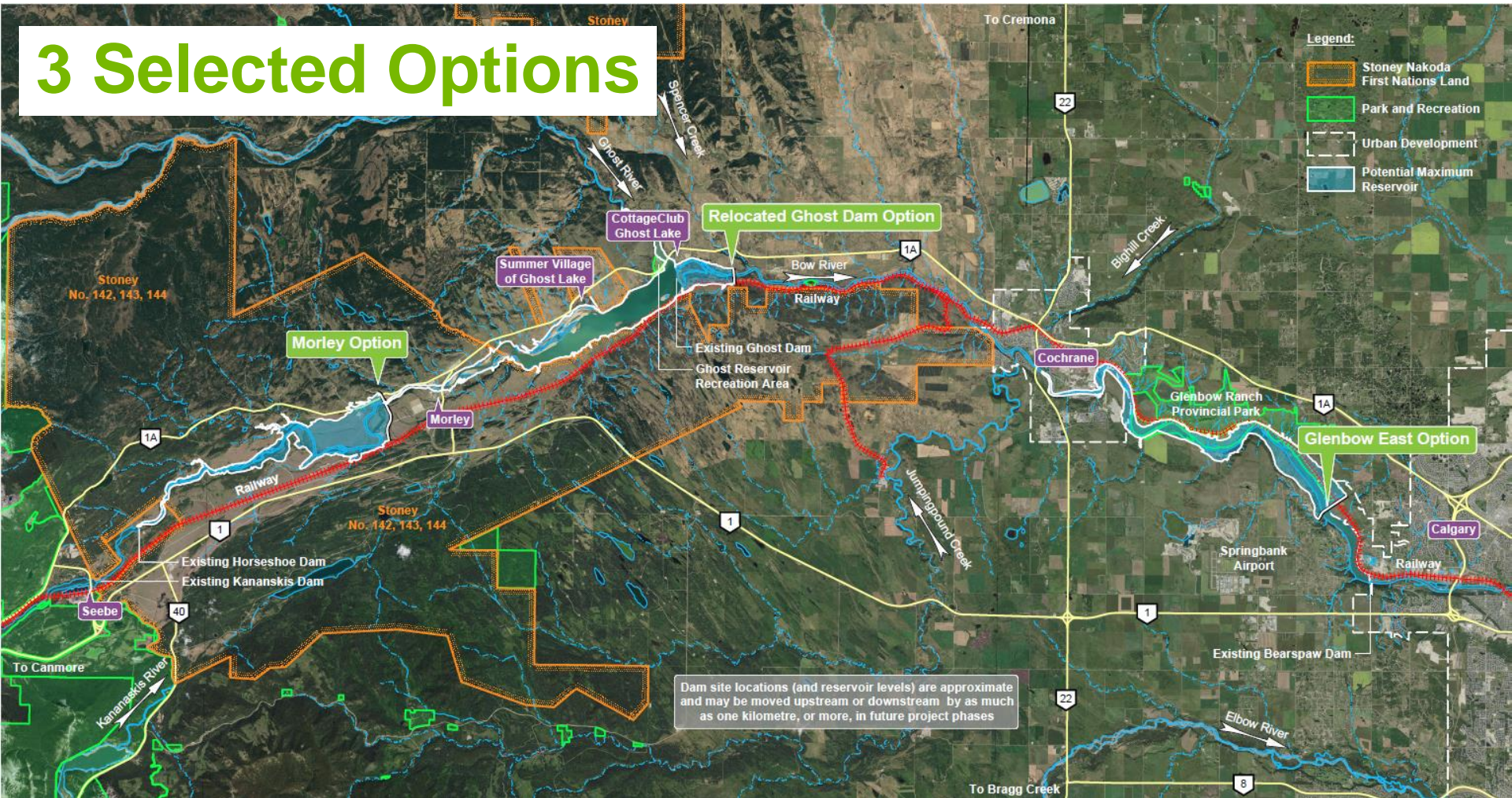
THIS DRAWING MAY HAVE BEEN REDUCED. ALL SCALE NOTATIONS INDICATED (i.e. 1:1000 etc.) ARE BASED ON 22" x 34" FORMAT DRAWINGS.



DRAFT

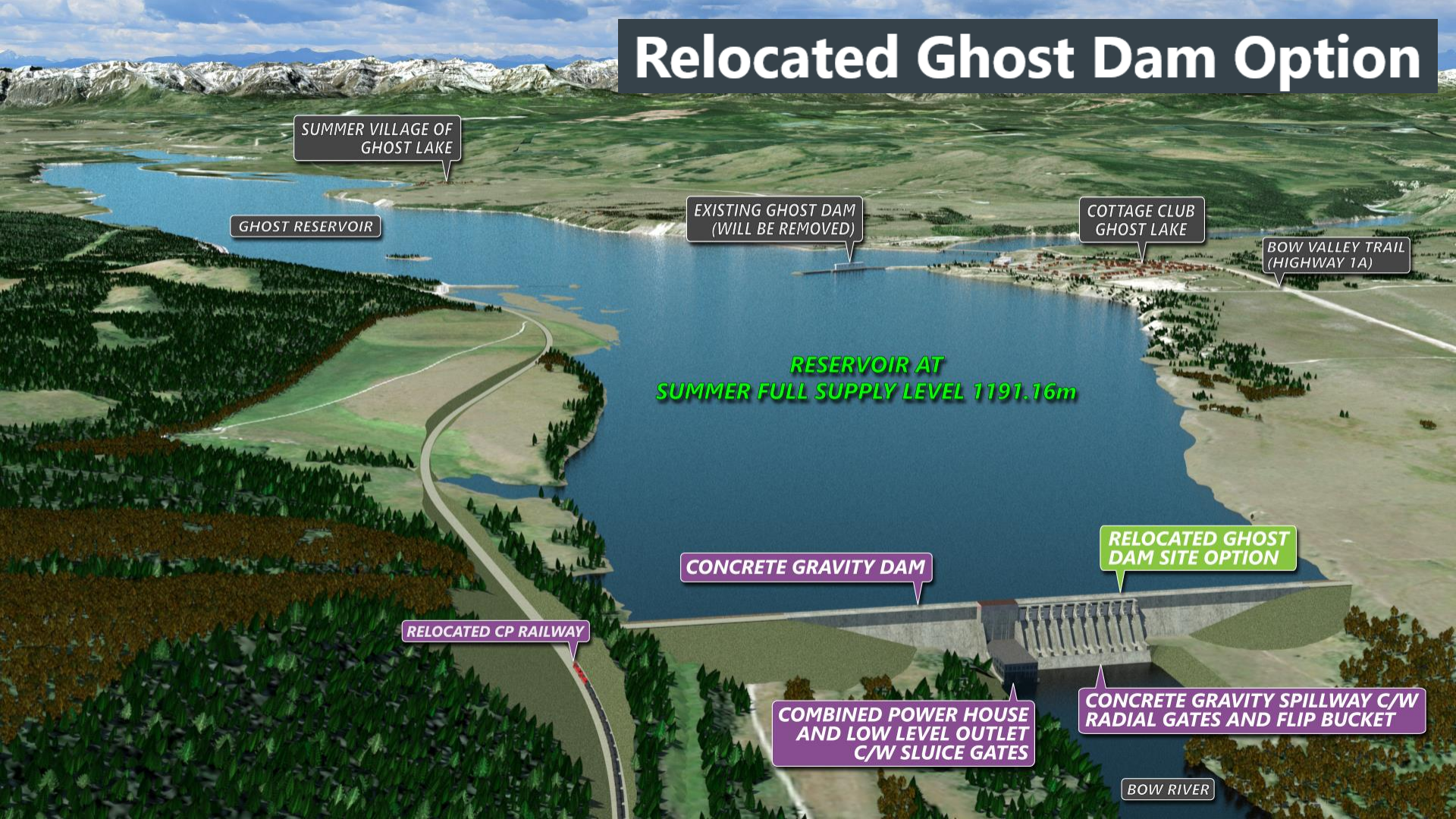
FOR DISCUSSION ONLY

3 Selected Options



Selected Sites Conceptual Designs

Relocated Ghost Dam Option



SUMMER VILLAGE OF GHOST LAKE

GHOST RESERVOIR

EXISTING GHOST DAM
(WILL BE REMOVED)

COTTAGE CLUB GHOST LAKE

BOW VALLEY TRAIL
(HIGHWAY 1A)

RESERVOIR AT
SUMMER FULL SUPPLY LEVEL 1191.16m

CONCRETE GRAVITY DAM

RELOCATED GHOST DAM SITE OPTION

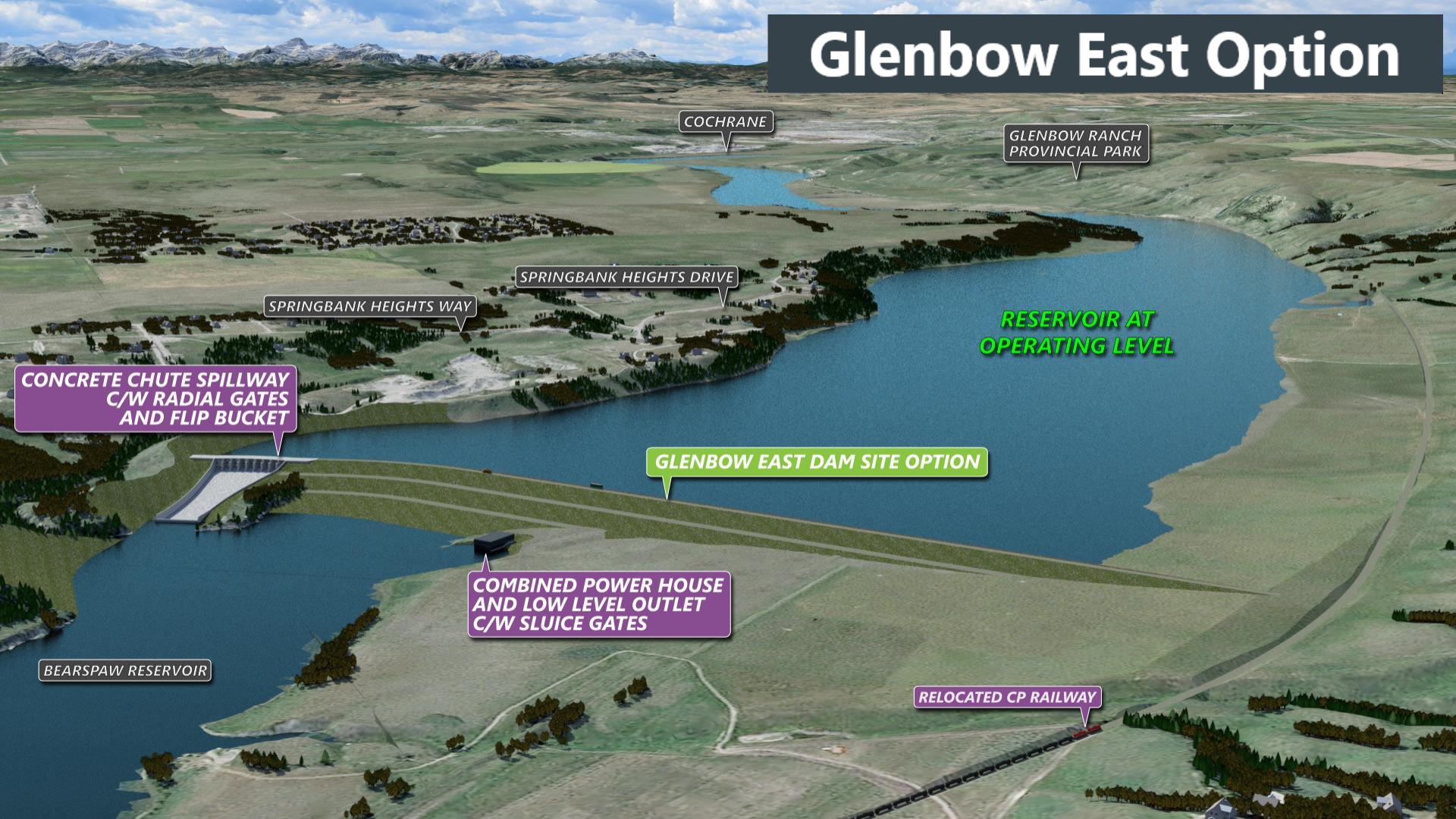
RELOCATED CP RAILWAY

COMBINED POWER HOUSE AND LOW LEVEL OUTLET
C/W SLUICE GATES

CONCRETE GRAVITY SPILLWAY C/W RADIAL GATES AND FLIP BUCKET

BOW RIVER

Glenbow East Option



COCHRANE

GLENBOW RANCH
PROVINCIAL PARK

SPRINGBANK HEIGHTS DRIVE

SPRINGBANK HEIGHTS WAY

RESERVOIR AT
OPERATING LEVEL

CONCRETE CHUTE SPILLWAY
C/W RADIAL GATES
AND FLIP BUCKET

GLENBOW EAST DAM SITE OPTION

COMBINED POWER HOUSE
AND LOW LEVEL OUTLET
C/W SLUICE GATES

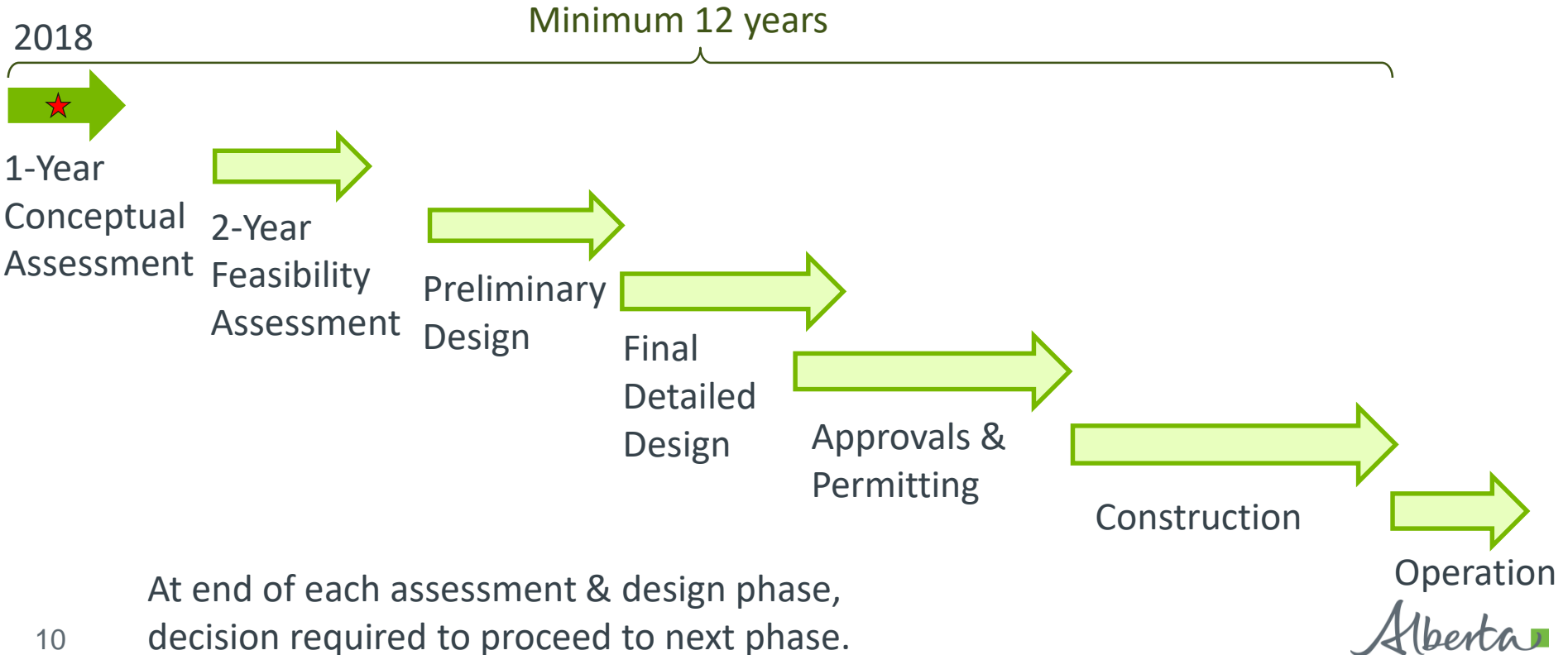
BEARSPAW RESERVOIR

RELOCATED CP RAILWAY

Next Steps for Engagement

- Meet with individual First Nations and Métis
- Hold public information sessions
 - September 30 – Cochrane RancheHouse
 - October 3 - RockPointe Church (Bears paw)
 - October 15 – RockPointe Church (Bears paw)
- Bow River Working Group Meeting #3

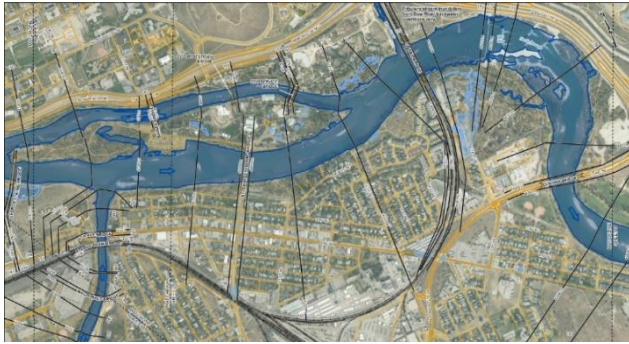
Project Timeline



Update: Provincial Flood Hazard Studies

Flood Maps - types and uses

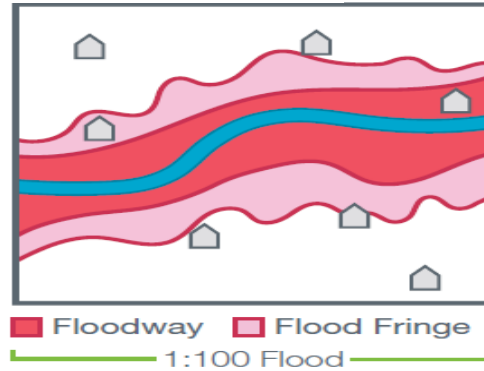
Flood inundation map, example



Uses

- Flood emergency planning
- Flood emergency response
- Illustration of flood forecasts

Flood hazard map, simplified graphic

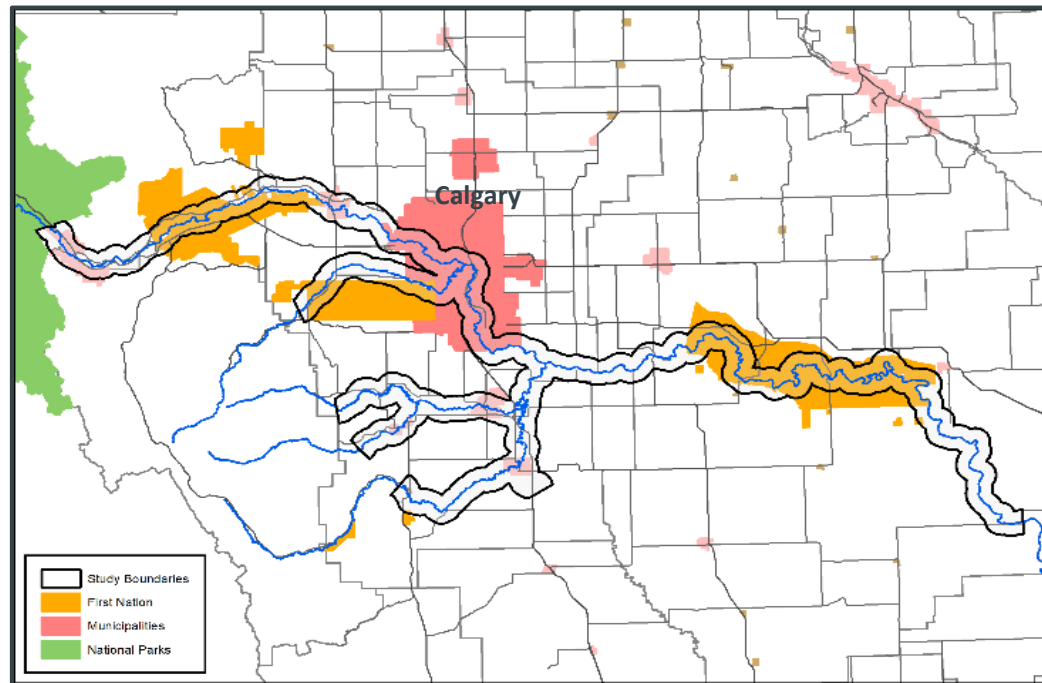


Uses

- Municipal land-use decisions
- Provincial flood management
- Federal/provincial disaster eligibility
- Structural flood mitigation support

New Flood Map Studies

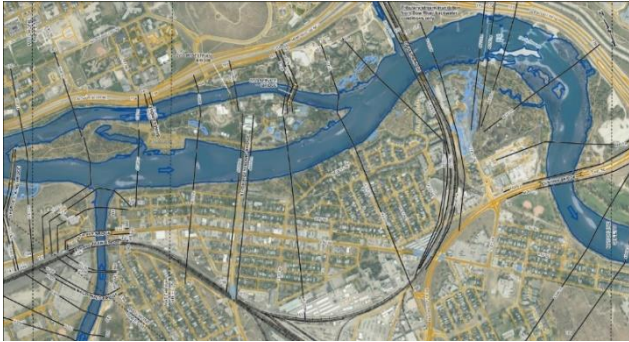
- 21 new flood map studies underway or complete
- 1,500 km of new or updated mapping
- Flood inundation maps have been shared with municipal and First Nation partners for technical feedback.



**New flood maps underway or complete
in the general Calgary area**

Flood Maps – finalization steps

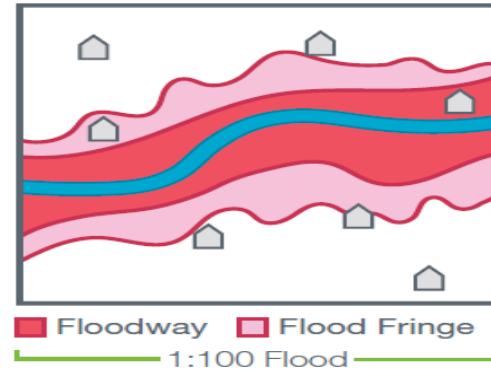
Flood inundation map, example



Steps

- Shared with municipalities, **considering feedback**
- Share with public, consider feedback
- Finalize, implement

Flood hazard map, simplified graphic



Steps

- **Considering guideline changes**, possible map revisions
- Share with municipalities, consider feedback
- Share with public, consider feedback
- Finalize, implement

Regulation in Floodways

- Municipal Affairs is lead, AEP supports as needed.
- Currently reviewing municipal floodway work that has been done so far.
- Any decisions made will consider:
 - public safety and future property damage
 - investments of landowners in floodways
 - municipal autonomy

Thank you

Questions?