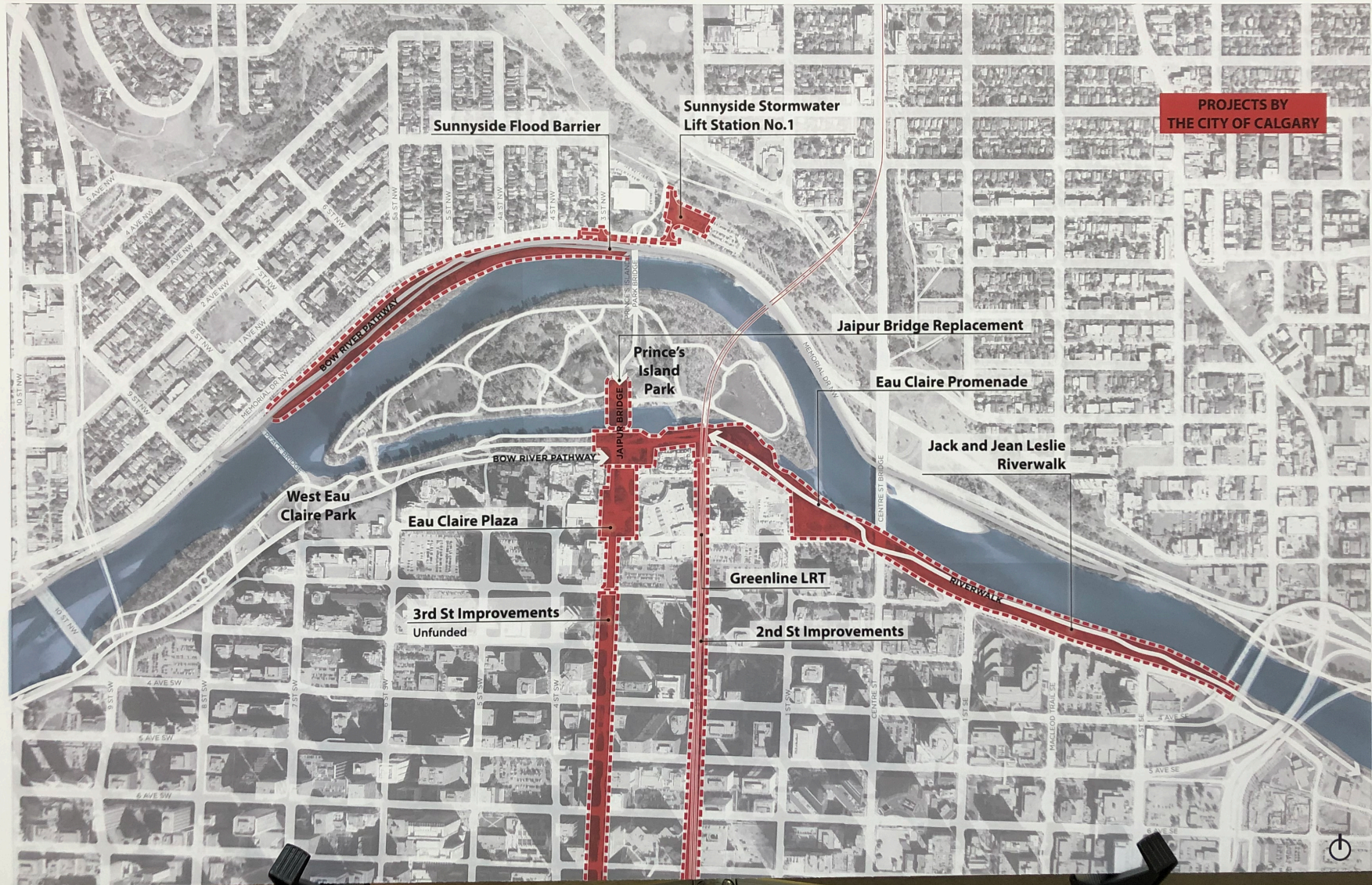


Calgary



# Eau Claire Area Projects





# Eau Claire Area Projects



## Eau Claire Promenade

The Eau Claire Promenade extends from West Eau Claire Park eastwards to the East Village Riverwalk and will create a safe, efficient and beautiful riverfront promenade and cycle network that integrates flood protection into a space that connects Calgary's downtown with the Bow River.

Please stop by the Promenade station to learn more about the project and provide feedback on a proposed design.



## Eau Claire Plaza

The Eau Claire Plaza is being redesigned to integrate into the vibrant, mixed-use Eau Claire community and with the Eau Claire Promenade and Prince's Island. This new design will embrace everyday community gatherings and have the capacity to host events and experiences that invite the participation of community members, Calgarians and visitors. It will be a space of wonder, a place grounded in history, and the porch space for social and cultural gatherings in Eau Claire.

Please stop by the Plaza station to learn more about the project and provide feedback on a proposed design.

## Jaipur Bridge Replacement

Jaipur Bridge is the main south access to Prince's Island Park. It's over 50 years old and needs to be replaced. A new bridge will improve access to Prince's Island Park, one of Calgary's most popular park destinations. Its design will be coordinated with the new design of the Eau Claire Promenade.





# Eau Claire Area Projects

## 2nd and 3rd Street S.W. Improvements

The focus of the 2nd and 3rd Street S.W. streetscape master plan is to provide a vision and principles for much needed life-cycle refresh connecting the Bow River and Eau Claire with Stephen Avenue and the Downtown Core. Evolving from the Eau Claire Public Realm Plan and adapting to changing mobility needs, the plan envisions continuous high-quality pedestrian spaces, generous street planting, on-street protected cycling infrastructure, future Green Line stations, and vehicular traffic with off-peak on-street parking. 2nd Street and 3rd Street S.W. will be designed as a couplet to consider new multi-modal choices in the network. In this couplet, the design of 3rd Street S.W. will focus on providing smooth and comfortable multi-modal connections, whereas the design for 2nd Street S.W. will focus on providing a uniquely generous pedestrian realm, and active retail frontage spaces.

## Sunnyside Flood Barrier

The Sunnyside Flood Barrier project is currently in the preliminary design stage, where we are determining the extent of improvements needed to the existing flood barrier. This stage consists of engineering studies and surveys to help inform various options. Near the end of this stage, we'll be gathering feedback from the Sunnyside community on the proposed options to develop a design that works for the community and aligns with our overall flood mitigation strategy.

## Sunnyside Stormwater Lift Station No. 1

The new Sunnyside storm lift station will be located at 200 Memorial Drive N.W. between the Calgary Curling Club and the Calgary Parking Authority (CPA) parking lot. The new lift station will alleviate localized flooding in the south east area of Sunnyside as well as overland flooding on Memorial Drive NW, keeping it open for Emergency services, citizens and City trouble crews. Construction of the new storm lift station began in 2018.

## Green Line

The Green Line team is currently undertaking a review of the construction method of the tunnel through the Centre City and Beltline in order to compare two different methods: single bore and twin bore. The primary focus of the review at this time is to determine the best tunneling construction methods and design that will provide a high-quality project for Calgarians within our budget.

More information on station location and layout in the Centre City and Beltline will be available as details are refined over the coming months.





# Eau Claire Public Realm Plan



The draft Eau Claire Public Realm Plan provides a comprehensive vision for the future of the Eau Claire Public Realm and is the guiding framework for projects happening in your community. It highlights key considerations, programs and elements that will allow Eau Claire area projects to capitalize on the many opportunities that exist in the area.

## Vision

Connecting the heart of the river with the heart of downtown, the public realm will evolve toward pedestrian and multi-modal activity, embracing opportunities to invigorate the public realm with social activity and ecology.



### For the City and Community

- Create spaces of various scales that provide for diverse users
- Design for flexibility and adaptability
- Embrace winter
- Clearly connect Eau Claire Plaza and Promenade with complementary programming and spaces
- Celebrate the area's history through the preservation and continued use of existing buildings and structures



### Resilient and Responsible

- Incorporate green infrastructure where possible to provide opportunities for stormwater cleansing and or infiltration
- Incorporate efficient and programmable lighting
- Utilize high quality, durable and beautiful materials and furnishing to create an authentic and timeless sense of space
- Incorporate flood mitigation along the Eau Claire Promenade and Jack and Jean Leslie Riverwalk to protect the area from at least a 2013-level flood



### Active and Multi-modal

- Plan for temporary programming/installations by providing necessary infrastructure and space
- Utilize comfortable micro-climates to create places for interaction and rest
- Provide broad space for pedestrian movement
- Extend the separated cycle path from West Eau Claire Park through to Jack and Jean Leslie Riverwalk





## Project Impacts

Construction of these projects will have a major impact on access to Prince's Island Park, Eau Claire Plaza, and Eau Claire Promenade from Spring 2020 to Fall 2022. The City is currently working to find a solution that minimizes the impact that construction will have on residents, commuters, businesses and events. Unfortunately, there is no option that will allow for the area to function as it currently does, during construction.

We are committed to meeting with residents, business owners, event organizers and community groups throughout the pre-construction and construction periods to discuss impacts and work together to find solutions.







# Road to Redevelopment

## Cultural History

1886

**EAU CLAIRE & BOW RIVER  
LUMBER CO. ESTABLISHED**

1914

**MAWSON PLAN**

1945

**LUMBER MILL SHUTS DOWN**

1947

**BUS BARNs BUILT**

1988

**WINTER OLYMPICS  
EAU CLAIRE PLAZA IS CONSTRUCTED**

1993

**EAU CLAIRE MARKET OPENS**

## Plaza Redevelopment Process

2006

**STAKEHOLDER INPUT + PUBLIC ENGAGEMENT  
EAU CLAIRE PLAZA DESIGN PROPOSAL**

» Concept Design

» *Cost-prohibitive design leads to value engineering*

2009

**STAKEHOLDER INPUT + PUBLIC ENGAGEMENT  
EAU CLAIRE PLAZA RE-DESIGN**

» Revised Concept Design

2013

**MAJOR FLOOD**

» Flood mitigation measures along the Bow River leads to re-evaluation of plaza design, including it's role in the City of Calgary + Eau Claire Community

2016

**STAKEHOLDER INPUT + PUBLIC ENGAGEMENT  
EAU CLAIRE PUBLIC REALM PLAN**

» Vision + Design Principles + New Concept Design

» *Stakeholder support for Vision + Design Priorities = Principles*

2017

**OPEN HOUSE : EAU CLAIRE PLAZA UPDATE**

2018

**WEST EAU CLAIRE OPENS**

2019

**STAKEHOLDER INPUT + PUBLIC ENGAGEMENT  
EAU CLAIRE PLAZA REDEVELOPMENT**





# What We Heard

## Vision

**EAU CLAIRE PLAZA IS AN ICONIC PUBLIC SPACE** that connects the vibrant mixed-use Eau Claire community, the Bow River Pathway, and Prince's Island; this is a place for neighbours, Calgarians, and visitors alike.

The design is grounded in history, with adaptable and engaging spaces that support social and cultural gatherings at all scales, throughout the year.

## Design Strategies + Project Goals

### For the Community and the City

#### A Vibrant Plaza

animated year-round with programming and events, large and small

#### A Flexible Plaza

with comfortable spaces and quality amenities that embrace everyday community use

### Resilient and Responsible

#### A Green Plaza

which exemplifies best practices for sustainable design and uses high quality materials

#### An Authentic Plaza

honouring the natural, cultural and social heritage of the site

### Active and Multi-Modal

#### An Integrated Plaza

with clear connections to pathways, local amenities, transit, and the adjacent community

#### An Accessible Plaza

with opportunities for all ages + abilities

## Elements



event stage



heritage realm



1886



gateway



play



events + open space



shading



water feature



lookout



nature





# Overall Design

## Urban/Nature

Eau Claire Plaza is a landmark public space in the heart of Calgary, where the Bow River flows past the downtown core. It is both an anchor and centre for the Eau Claire Community and a destination for Calgarians and visitors.

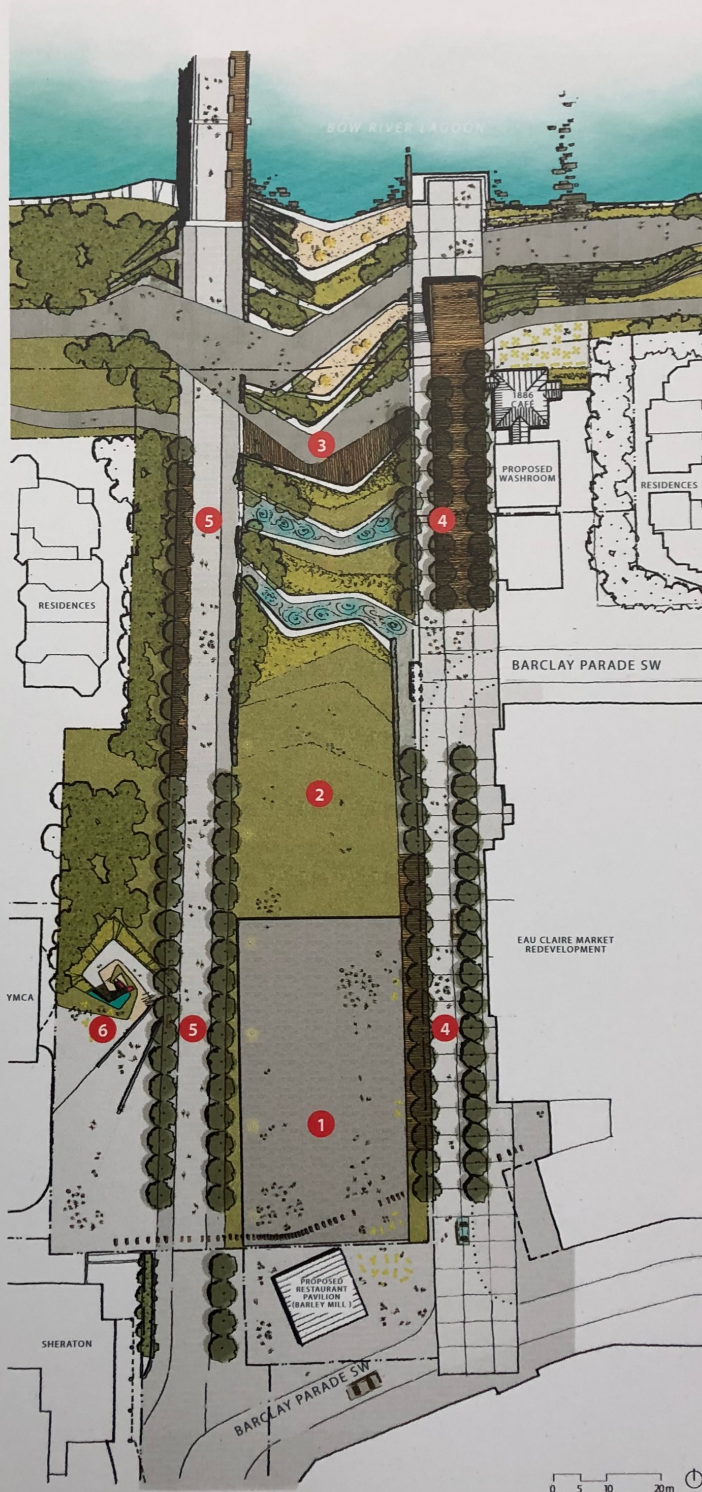
## Design Philosophy

The Eau Claire Plaza is uniquely situated – a large public space within the urban fabric of Calgary's downtown, a gateway to Prince's Island and the Bow River, and a major node in the Riverwalk network. The overarching theme that emerged throughout the past 10+ years of stakeholder and public engagement is the intersection of nature and culture.

**Eau Claire Plaza is a space where nature and the urban fabric collide, sculpting an iconic landscape designed as a stage for public life.**

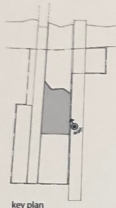
## Character Areas

- 1 Urban Plaza
- 2 Central Green
- 3 Riverside Terraces
- 4 Market Street
- 5 Promenade
- 6 Play

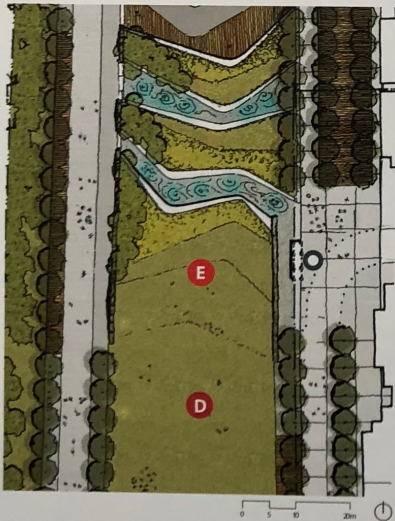




# Central Green



key plan



## Flexible & Dynamic

The Central Green marks the dynamic threshold between the nature of the Bow River and the urban fabric. This area is defined by dramatic folds in landform and outcrops of stone, representing the collision of these two forces.

### D Manicured Lawn

Sunny in both winter and summer, the lawn is a flexible space that serves as a soft, green counterpart to the Urban Plaza's podium. It is easily adaptable for a wide range of events, activities, and casual uses.

### E Landform

The collision of urban + nature is expressed in a dramatic inclined landform that serves as a playful extension of the manicured lawn.

### O Relocated Olympic Monument



### Warm Weather Programming

- Small-scale live music
- Picnics
- Fitness classes
- Hula-hooping
- Lawn games
- Overnight campouts
- Film screenings
- Harvest-time pumpkin patch
- Drum circles
- Tai Chi

### Cold Weather Programming

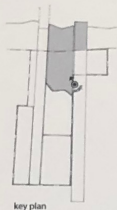
- Ice mini-golf
- Tobogganing
- Winter film festival
- Winter lighting installation

A Vibrant Plaza  
 A Flexible Plaza  
**A Green Plaza**  
 An Authentic Plaza  
 An Integrated Plaza  
 An Accessible Plaza

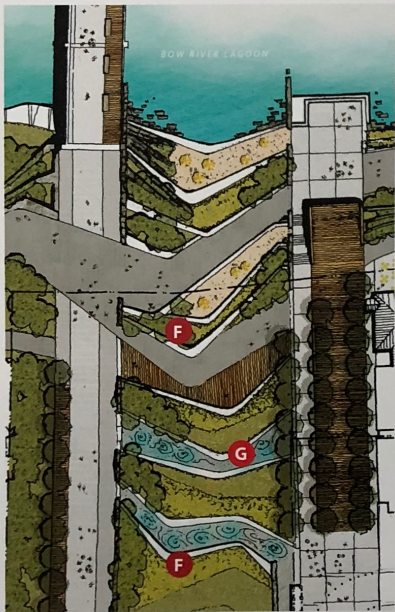




# Riverside Terraces



key plan



0 5 10 20m

## Playful Transition

The Riverside Terraces extend the plaza all the way to the Bow River, integrating the Plaza with the Bow River Pathway and Prince's Island and affording users an opportunity to touch the water. The undulating layers are a final expression of the urban environment's collision with nature, supporting a variety of active and passive uses within its folds.

### F Naturalized Margins

A plant palette, inspired by the native regional landscape, introduces nature into the site, creating soft and textured layers within the terraces.

### G Water Feature

A series of depressions within the landscape folds host spray jets, a dynamic urban water future that contrasts with the natural flow of the Bow River. Both water elements encourage cooling off and engaging play in the summer.



### Warm Weather Programming

- Guided nature walks
- Environmental/horticulture classes
- Art installations
- Guided meditation
- Photography classes
- Migratory birdwatching
- Bike maintenance classes
- Fitness stations
- Seasonal snack concession

### Cold Weather Programming

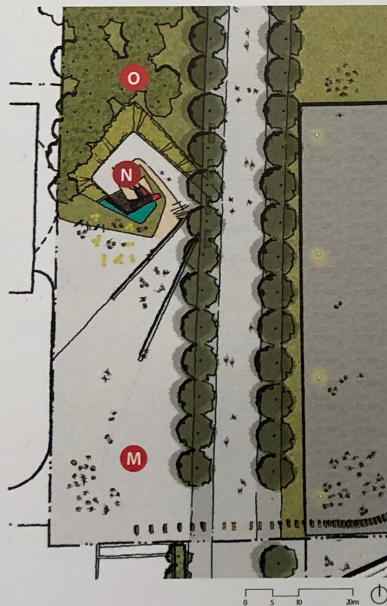
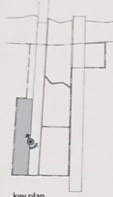
- Winter lighting installation
- Winter birdwatching
- Skating viewing
- Astronomy/star-gazing
- Hot beverage concession

**A Vibrant Plaza**  
 A Flexible Plaza  
**A Green Plaza**  
 An Authentic Plaza  
 An Integrated Plaza  
 An Accessible Plaza





# Play



## Play for All Ages

This space connects the Plaza with the YMCA; it serves as its front porch. Activated with urban and nature-inspired elements that encourage play and exploration, while supporting exterior programming opportunities for the facility.

### M Front Porch

Urban amenities populate the plaza space, offering flexibility and adaptability to users enjoying this area, as well as linking the YMCA with Eau Claire Plaza.

### N Overlook

An accessible overlook is a landmark feature of the area, providing a unique vantage point for observing the plaza activity.

### O Forest

A treed backdrop enhances the existing buffer between the plaza and the adjacent residential complex, while also providing informal play opportunities.



### Warm Weather Programming

- Permanent playground
- Art supply cart
- Storytime
- Magic shows
- Children's music classes
- Obstacle course for toddlers
- Harvest-time pumpkin carving

### Cold Weather Programming

- Permanent playground
- Snowman building contest
- Scavenger hunts

- A Vibrant Plaza
- A Flexible Plaza
- A Green Plaza
- An Authentic Plaza
- An Integrated Plaza
- An Accessible Plaza





Calgary



## Next Steps

Thank you for attending the Eau Claire Public Realm open house.

Please provide your feedback before you leave or provide input online until April 30.

[engage.calgary.ca/eauclaire](https://engage.calgary.ca/eauclaire)

For more information about projects happening in the Eau Claire area and to receiving project updates, please visit [calgary.ca/eauclaire](https://calgary.ca/eauclaire) and sign-up for our **e-newsletter**.

